

# CRP-RA07A-08 CRP-RA09A-07

## INDUSTRIAL ROBOT HANDLING APPLICATION

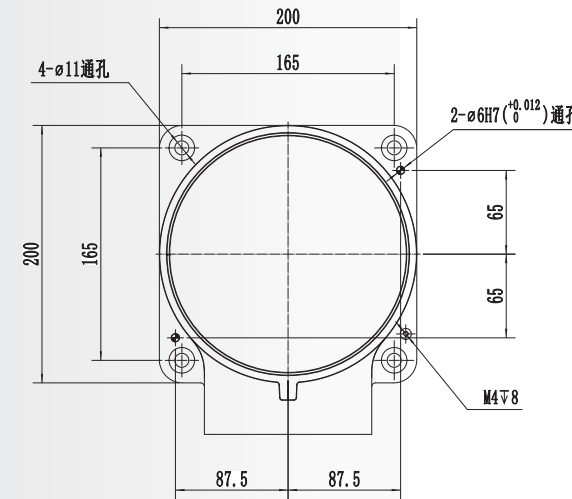


### FUNCTIONAL FEATURES

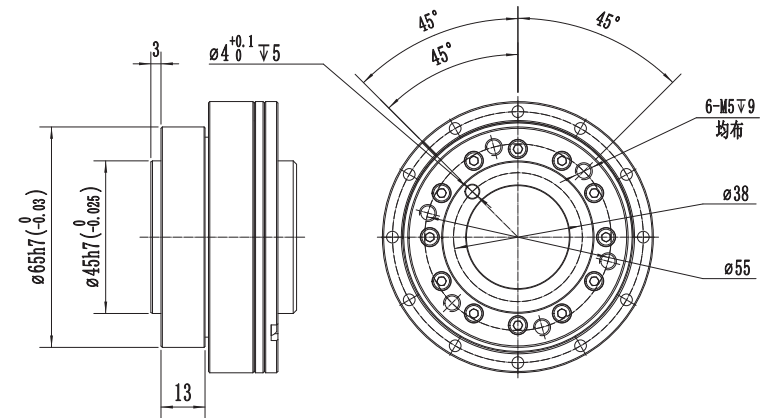
- Adopt modular design to effectively reduce the failure rate of the whole machine.
- Well-knit design makes the robot more convenient in small space.
- The arm span is 712/916mm. It has strong payload capacity, and rated payload 7 Kg/6 kg. It is easily applied in multi application.
- Lighter structure design than other same level product, so it is easy to install inside a system or to mount upside -down
- High rigidity arm and top level servo control technology guarantee the smoothness and stability while the movement.
- Built-in cable and external cable fixing base to meet customization requirements.
- Adopt leak-proof structure
- High expansibility, multiple user bracket installation platforms are set on the robot body, which is convenient for users to fix cables and related auxiliary tools.

### ROBOT BODY TECHNICAL PARAMETERS

Model	CRP-RA07A-08	CRP-RA09A-07
<b>Arm form</b>	Vertical multiple joints	
<b>Degree of freedom</b>	6 axis	
<b>Maximum payload</b>	8KG	7KG
<b>Repeated positioning accuracy</b>	±0.02mm	±0.03mm
<b>Maximum reaching distance</b>	712mm	916mm
<b>Robot body weight</b>	44KG	46KG
<b>Installation mode</b>	Ground, upside down mounting	
<b>Maximum travel</b>	axis 1	-170°-170°
	axis 2	-44°-188°
	axis 3	-62°-180°
	axis 4	-185°-185°
	axis 5	-120°-125°
	axis 6	-360°-360°
<b>Maximum speed</b>	axis 1	400°/S
	axis 2	340°/S
	axis 3	370°/S
	axis 4	535°/S
	axis 5	411°/S
	axis 6	698°/S
<b>Allowable torque</b>	axis 4	16.2N.m
	axis 5	16.2N.m
	axis 6	9.5N.m
<b>Allowable moment of inertia</b>	axis 4	0.38kg.m <sup>2</sup>
	axis 5	0.38kg.m <sup>2</sup>
	axis 6	0.16kg.m <sup>2</sup>
<b>Noise level</b>	<75dB(A)*	
<b>Installation environment</b>	ambient temperature	0-45°C
	relative humidity	20-85% (No condensation)
	vibration	Under 0.5 G
	Others	Robot installation must be away from: Flammable or corrosive liquids or gases, electrical sources of interference
<b>IP level</b>	Body IP54 , wrist IP65	
<b>Advantage features</b>	Compact structure, high speed, high precision, high expansibility and easy operation	
<b>Application</b>	welding cutting, assembly, handling, marking, grinding	
<b>Electric Cabinet Configuration</b>	G5	

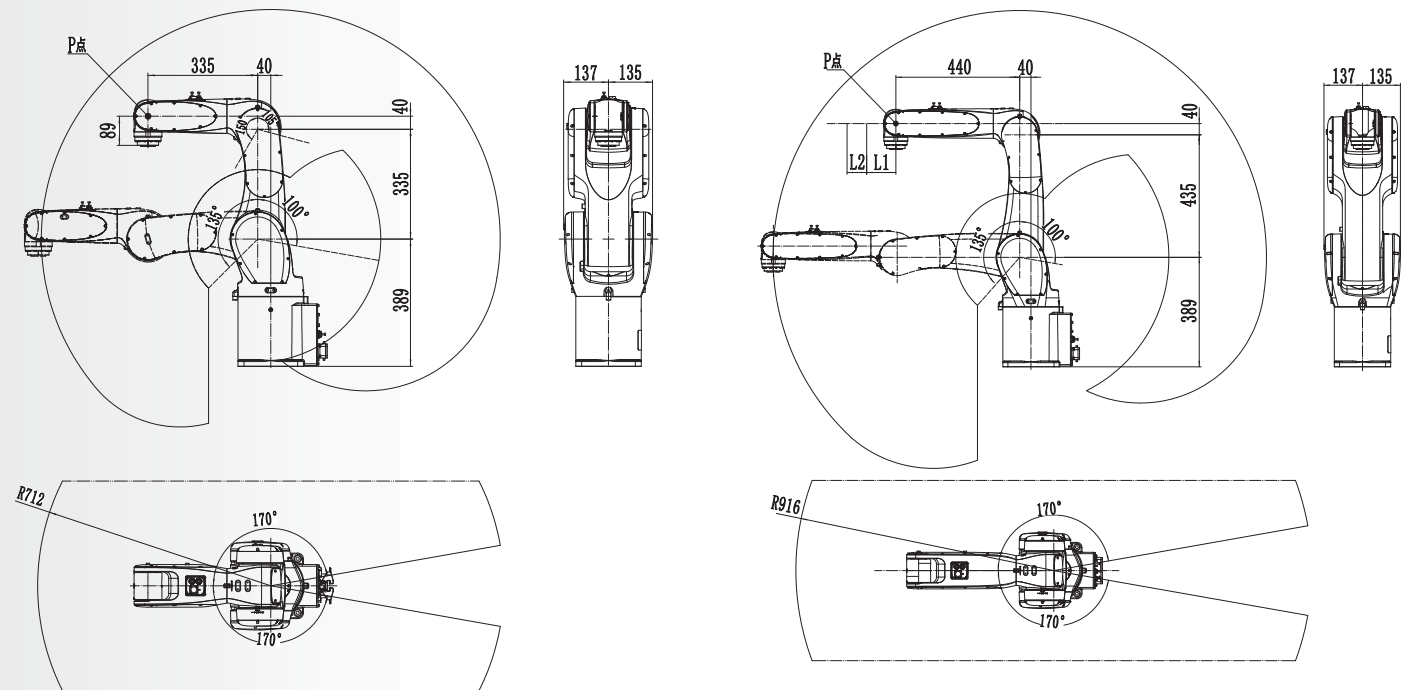


Installation Dimension of Base



Flange Dimensions

### MOTION RANGE DIAGRAM



CRP-RA07A-08

CRP-RA09A-07